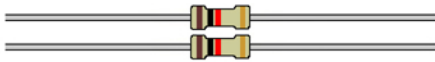


Synthrotek PT2399 Dev Delay Visual Bill of Materials / Parts List

RESISTORS

1kΩ - R1, LED (+) - SPST (Toggle)



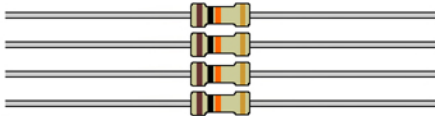
4.7kΩ - R8



5.6kΩ - R9



10kΩ - R3, R4, R6, R7



15kΩ - R5, R12



18kΩ - R11



100kΩ - R13



200kΩ - SPST (momentary) - C3 (-)



total - 13

DIODES

5mm Red LED -
SPST (toggle) center - P (D/C Jack)



CAPACITORS

560pF Ceramic - C8, C11



3.3nF Ceramic - C10



3.9nF Ceramic - C16



10nF Ceramic - C12



100nF Ceramic - C1, C4, C5, C6, C7



4.7uF - Electrolytic - C15, C17



10uF - Electrolytic - C13, C14



47uF - Electrolytic - C3, C9



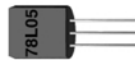
100uF - Electrolytic - C2



total - 17

VOLTAGE REGULATOR

LM78L05 - U2



INTEGRATED CIRCUITS

16-Pin Socket - U1



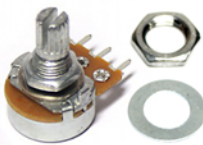
PT2399 IC - U1



total - 2

POTENTIOMETERS

20k Linear - R2



50k Linear - R10, R11
(via closest to board edge) - R10(2)

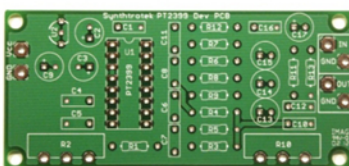


total - 3

Knobs



PCB



SWITCHES

SPST (see instructions)



Momentary Push Button
(see instructions)



total - 3

JACKS / CONNECTORS

3.5mm Mono Jack - IN, OUT



OR

1/4" Mono Jack - IN, OUT



DC Jack



9V Battery Clip



total - 4

7 Feet Wire

